



CORPORATE
BROCHURE

ABOUT GLOBAL LAB

We work for explaining, determining, evaluating, judging, examining, inspecting, analyzing, improving and controlling your requirements to deliver an improvised option in your current process, assets, infrastructure or product for sustainable growth. We are confident about our proven expertise and competency for both technical and administrative conformity for improvement in quality, standard, status, condition, and value.

Global Lab is one of the leading independent testing and calibration service providers in the country for construction industry and its associates. It is our immense pleasure to share that Global Lab is recognized as a universal benchmark for its quality and integrity.



10000+
PROJECTS SERVED



9562+
SATISFIED CLIENTS



500+
TEST & CALIBRATION METHODS



150+
PROFESSIONALS & EXPERTS



Global Lab is a prominent independent testing and calibration service provider in the construction industry and its associated fields.

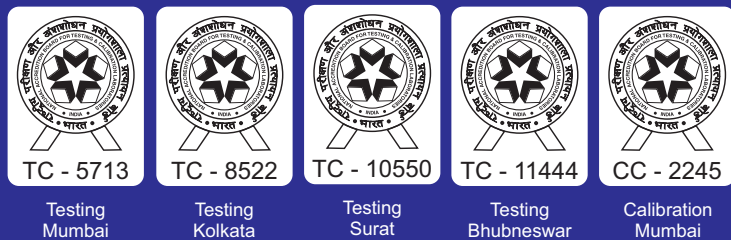
We specialize in various areas of construction and building science, including Construction Material Mechanical & Chemical Testing, Concrete Durability Testing, Metal Testing, Non-destructive testing of RCC Structure, Pile Testing, Research and Development of Products Structural Health Monitoring & Calibration of Lab equipments.

ACCREDITATION

We are ISO/IEC: 17025-2017- accredited by NABL Testing & Calibration Laboratory.

National Accreditation Board for Testing and Calibration Laboratories (NABL) is an independent accreditation body under Quality Council of India.

NABL has been established with the objective of providing Government, Industry Associations and Industry in general with a scheme of Conformity Assessment Body's accreditation which involves third-party assessment of the technical competence of testing and calibration laboratories, proficiency testing providers and reference material producers.



OUR VISION

- Global Lab vision is to emerge as the most reliable & competent testing and calibration laboratory partner to our customers and most admired services provider in construction and other sectors.
- It is our belief that individual consultants, engineers and 'not so big' organization have a significant role for making India brighter and we serve them with high priority in order to keep up the social and corporate responsibility.

OUR HISTORY

We started our journey on the eve of Independence Day 2009 in the field of construction materials testing at Mumbai, India. We are delighted to share that more than 10000s of Customers are satisfied with our ethics, quality, and services.

The lists of our clientele are both from various central & state government organizations and Multinational & International Construction & Industrial giants.

Our team comprises of trained engineers, technicians and operators with an eye for detail, to perform Testing of Materials & Calibration of Lab equipments strictly as per relevant National & International standards.

OUR MISSION

- To be a leading Testing & Calibration Laboratories in the Global Market.
- To become the customers most preferred choice by attaining excellence in quality, trustworthy and timely completed value added services.
- Continually innovate, develop and adopt state-of-the-art technology in methods to enhance productivity and cost effectiveness.
- Continually improve the competence of our people and make them proud to work at Global Lab.

OUR ACCREDITATION & APPROVALS

1 NABL TESTING - MUMBAI



National Accreditation Board for Testing and Calibration Laboratories
CERTIFICATE OF ACCREDITATION
GLOBAL LAB
 has been assessed and accredited in accordance with the standard
ISO/IEC 17025:2017
"General Requirements for the Competence of Testing & Calibration Laboratories"
 for its facilities at
 UNIT NO 31 & 32, SETHIA INDUSTRIAL PARK, SURVEY NO-39, SATIVALI, VASAI-E, VASAL, THANE, MAHARASHTRA, INDIA
 in the field of
TESTING

Certificate Number: TC-5713
 Issue Date: 07/10/2022 Valid Until: 06/10/2024

This certificate remains valid for the Scope of Accreditation as specified in the annexure subject to continued satisfactory compliance to the above standard & the relevant requirements of NABL.
 (To see the scope of accreditation of this laboratory, you may also visit NABL website www.nabl-india.org)

Name of Legal Identity : Global Lab
 Signed for and on behalf of NABL

 
 N. Venkateswaran
 Chief Executive Officer

2 NABL TESTING - KOLKATA



National Accreditation Board for Testing and Calibration Laboratories
CERTIFICATE OF ACCREDITATION
GLOBAL LAB
 has been assessed and accredited in accordance with the standard
ISO/IEC 17025:2017
"General Requirements for the Competence of Testing & Calibration Laboratories"
 for its facilities at
 1073, LASHKAR HAT, WARD NO. 107, PICNIC GARDEN, KOLKATA, WEST BENGAL, INDIA
 in the field of
TESTING

Certificate Number: TC-8522
 Issue Date: 29/05/2023 Valid Until: 28/05/2025

This certificate remains valid for the Scope of Accreditation as specified in the annexure subject to continued satisfactory compliance to the above standard & the relevant requirements of NABL.
 (To see the scope of accreditation of this laboratory, you may also visit NABL website www.nabl-india.org)

Name of Legal Identity : GLOBAL LAB
 Signed for and on behalf of NABL

 
 N. Venkateswaran
 Chief Executive Officer

3 NABL TESTING - SURAT



National Accreditation Board for Testing and Calibration Laboratories
CERTIFICATE OF ACCREDITATION
GLOBAL LAB MATERIAL TESTING PVT. LTD.
 has been assessed and accredited in accordance with the standard
ISO/IEC 17025:2017
"General Requirements for the Competence of Testing & Calibration Laboratories"
 for its facilities at
 153, RJD TEXTILE PARK, ICHHAPOR, GIDC, BHATPORE, SURAT, GUJARAT, INDIA
 in the field of
TESTING

Certificate Number: TC-10550
 Issue Date: 22/04/2022 Valid Until: 21/04/2024

This certificate remains valid for the Scope of Accreditation as specified in the annexure subject to continued satisfactory compliance to the above standard & the relevant requirements of NABL.
 (To see the scope of accreditation of this laboratory, you may also visit NABL website www.nabl-india.org)

Name of Legal Identity : GLOBAL LAB MATERIAL TESTING PRIVATE LIMITED
 Signed for and on behalf of NABL

 
 N. Venkateswaran
 Chief Executive Officer

OUR ACCREDITATION & APPROVALS

4 NABL TESTING - BHUBNESWAR

NABL
National Accreditation Board for
Testing and Calibration Laboratories

CERTIFICATE OF ACCREDITATION

GLOBAL LAB MATERIAL TESTING PRIVATE LIMITED
has been assessed and accredited in accordance with the standard
ISO/IEC 17025:2017
"General Requirements for the Competence of Testing & Calibration Laboratories"
for its facilities at
PLOT NO. 206, MAHADEV NAGAR, JHARPADA ROAD, JHARPADA, BHUBANESWAR, KHORDHA, ODISHA, INDIA
in the field of
TESTING

Certificate Number: TC-11444
Issue Date: 14/03/2023 Valid Until: 13/03/2025

This certificate remains valid for the Scope of Accreditation as specified in the annexure subject to continued satisfactory compliance to the above standard & the relevant requirements of NABL.
(To see the scope of accreditation of this laboratory, you may also visit NABL website www.nabl-india.org)

Name of Legal Identity : GLOBAL LAB MATERIAL TESTING PRIVATE LIMITED
Signed for and on behalf of NABL

N. Venkateswaran
N. Venkateswaran
Chief Executive Officer

5 NABL CALIBRATION - MUMBAI

NABL
National Accreditation Board for
Testing and Calibration Laboratories

CERTIFICATE OF ACCREDITATION

GLOBAL LAB
has been assessed and accredited in accordance with the standard
ISO/IEC 17025:2017
"General Requirements for the Competence of Testing & Calibration Laboratories"
for its facilities at
UNIT NO-31&32, SHETHIA INDUSTRIAL PARK, SURVEY NO-39, PALGHAR, MAHARASHTRA, INDIA
in the field of
CALIBRATION

Certificate Number: CC-2245
Issue Date: 25/09/2022 Valid Until: 24/09/2024

This certificate remains valid for the Scope of Accreditation as specified in the annexure subject to continued satisfactory compliance to the above standard & the relevant requirements of NABL.
(To see the scope of accreditation of this laboratory, you may also visit NABL website www.nabl-india.org)

Name of Legal Identity : Global Lab
Signed for and on behalf of NABL

N. Venkateswaran
N. Venkateswaran
Chief Executive Officer

6 CIDCO APPROVAL

CIDCO
WE MAKE CITIES

CITY AND INDUSTRIAL DEVELOPMENT CORPORATION OF MAHARASHTRA LIMITED
(CIN - U99999 MH 1970 SGC - 014574)

REGD. OFFICE:
"NIRMAL", 2nd Floor Natimam Point,
Mumbai - 400 021
PHONE : 00-91-22-6650 0900
FAX : 00-91-22-2202 2509

HEAD OFFICE:
CIDCO Bhavan, CBD Belapur,
Navi Mumbai - 400 614.
PHONE: 00-91-22-6791 8100
FAX : 00-91-22-6791 8166

Ref. No. CIDCO/EE (QC)/LAB/2022/570 Doc. No. 10.2022

To,
M/s. Global Lab,
Unit No 31 & 32, Sethia Industrial Park,
Opp. Sayali Petrol Pump, Sativali,
Vasai (E), Palghar-401208.

Subject : Approval to renewal of Material Testing Laboratory of M/s. Global Lab.

Reference : 1. Our Letter No. CIDCO/EE(QC)/LAB/2022/86 dated 07.04.2022
2. Your Letter No. GL/CIDCO/OCT/2022 dated 06/10/2022
3. NABL's Certificate of Accreditation No. TC-5713 dated 07/10/2022 valid up to 06/10/2024

Dear Sir,

This is in continuation to our letter under Reference-1, and CIDCO is pleased to inform you that, your application for extension of registration as a Material Testing Laboratory viz. M/s. Global Lab situated at Location-1: Unit No 31 & 32, Sethia Industrial Park, Opposite Sayali Petrol Pump, Sativali, Vasai (E), Palghar-401208 and Location-2: Shop No. 29 & 30, Plot No. D1 & D2, Krishi Industrial Estate TTC Industrial Area, Turbhe, Thane, PIN-400613" is hereby approved by this office. The said Laboratory is now registered with this office with effect from 07.10.2022 to 14.04.2024 (i.e. upto validity of your registration vide our Letter under Reference-1)

You are hereby permitted to test the construction related samples pertaining to various infrastructural and building works of CIDCO as per your revised Scope vide NABL's Certificate of Accreditation under Reference-3.

During the period of registration, the following conditions will be applicable.

1. The Laboratory shall be maintained in working condition for entire period.

M/s Global Lab
Page 1 of 3

In case of any corruption related complaints, please visit :
www.cidco.maharashtra.gov.in Click on Dakshata link

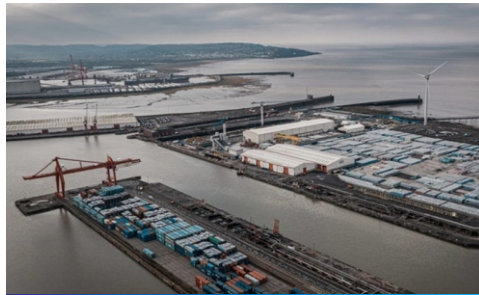
SECTORS WE SERVE



Highway



Railway



Ports



Airport



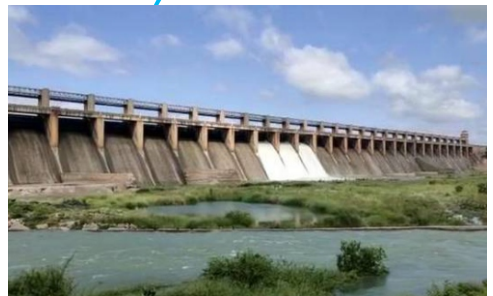
Bridge



Building



Industrial



Dam



Marine



Metro



Hydropower



Nuclear Power

DIGITIZED OPERATIONS

At Global Lab, we understand the challenges that come with sample collection, especially in busiest cities like Mumbai. That's why we offer a hassle-free Test Sample Pickup service that covers the entire Greater Mumbai region.

You can easily book a pickup from your site through our dedicated online customer login portal, and our fleet of pickup vehicles will ensure that your samples are collected and transported to our lab promptly.

We also offer a convenient online booking system for Site Tests/Calibration, where you can easily schedule a test/calibration at your convenience. Once booked, you can track the progress of your test/calibration through your dedicated online panel and receive regular updates until completion.

To further enhance your experience with us, we offer an Online Witness Test facility that allows you to witness your tests being conducted on advanced and sophisticated equipment from anywhere with just an internet connection.



At Global Lab, we believe in staying ahead of the game by leveraging the latest technology and innovative solutions. In line with the Government of India's "Digital India" program, our laboratories have implemented a state-of-the-art SaaS-based QLMS software called 'Autovity' across all our facilities.

This software has helped us control, monitor, and optimize our laboratory operations, ultimately leading to enhanced productivity, cost-effectiveness, and transparency in reporting.



ACCESS REPORTS FROM ANYWHERE, ANYTIME

At Global Labs, we understand the importance of having access to reliable and timely information about the performance of your building materials. That's why we are proud to offer digital reporting services that put that information right at your fingertips, anywhere and anytime.



PROUD TO BE PART OF PRESTIGIOUS PROJECT



Lodha One World Project - Worli (Mumbai)



Minerva Tower - Lokhandwala (Mumbai)



Omkar - 1973 - Worli (Mumbai)



Oberoi Sky City - Borivali (Mumbai)



Prestige Jasdhan Classic - Mahalaxmi (Mumbai)



Peninsula Salsette - Byculla (Mumbai)

PROUD TO BE PART OF PRESTIGIOUS PROJECT



Piramal Ananya - Byculla (Mumbai)



One Marina - Marine Lines (Mumbai)



Oberoi Enigma - Mulund (Mumbai)



Oberoi 360 West - Worli (Mumbai)



Bullet Train Project



Mumbai Metro - Mumbai

PROUD TO BE PART OF PRESTIGIOUS PROJECT



Mumbai Coastal Road Project - Mumbai



Trans Harbour Link Project - Mumbai



Navi Mumbai Metro



Dhubari to Phulbari Bridge - Assam



Statue of Unity - Gujarat



Ram Mandir Project - Ayodhya

PROUD TO BE PART OF PRESTIGIOUS PROJECT



BAPS Temple - Surat



Indira Gandhi Hospital Project- Delhi



DAICEC Project - Bandra Kurla (Mumbai)



Statue of Equality - Mumbai



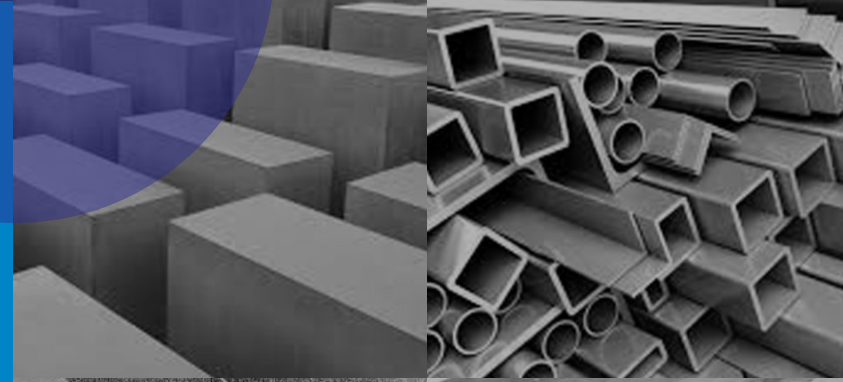
New Parliament Building - New Delhi



Statue of Oneness - Omkareswar

SERVICES

Precision and Perfection: We keep to build the truth



OUR SERVICES



Calibration Services



Chemical Testing



Field Soil Testing



Concrete NDT & Maturity Testing



Mechanical Testing



Pile Testing



Concrete Durability Test



Metal Hardness Testing



CCS Concrete Consultancy



Structural Health Monitoring



Concrete Mix Design

OUR ETHOS



Authenticity



Accuracy



Transparency



Reliability

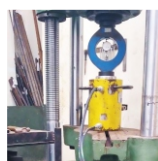


Global Lab is the one of the selected laboratory to provide more than 600 tests & more than 80 calibrations under NABL accreditation.



CALIBRATION SERVICES

Force | Pressure | Mass | Acceleration & Speed | Thermal | Dimension



Force
Range : 2 - 3000 kN



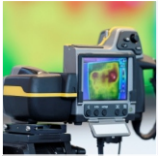
Pressure
Range : up to 700 bar



Mass
Mass-Weighing Balance



Dimension
Range : Vernier Caliper : 300 mm- LC 0.01 mm, Micrometer : 50 mm- LC 0.001 mm, Dial Gauge : 25 mm- LC 0.001 mm, LVDT : 25 mm - LC 0.001 mm, IS Sieves - 32 Micron to 125 mm
Vernier Caliper, Micrometer, Dial gauge, Test Sieves, LVDT, Profile Projector, Glass Scale, Extensometer



Thermal
Range: -20 C to 1200 C



Acceleration & Speed
Range : 20 - 20000 RPM



MECHANICAL TESTING SERVICES

Cement | Flyash | Microsilica | Aggregates | Concrete Rebar | Soil | Tiles | Couplers | Metallic Materials | Rebar/Anchor Pull out | Ready Mix Plaster | Bricks Gypsum | Tiles Adhesive | Grout | Block Joining Mortar | AAC Block | Concrete Block | Paver Block

Mechanical testing services of:

- Cement
- Flyash
- Silica Fume
- Ground Granulated Blast Furnace Slag
- Coarse Aggregates
- Ceramic Tiles
- Common Burn Clay Brick
- HT Wire Strand
- Structural Steel
- Steel Tube
- Binding Wire
- Square & Rectangular Hollow Steel Section
- Stainless Steel Bars & Wires
- Cementitious Grout
- Epoxy Grout
- Fusion Bonded Epoxy Coat Bar
- Harden Concrete
- Flyash Brick
- AAC Block
- Hollow Solid Concrete Block
- Paver Block
- Reinforcement Bar
- Fine Aggregates
- Steel Coupler
- Soil Test
- Rock
- Gypsum Plaster
- Ready Mix Plaster & Mortar
- Block Joint Mortar
- Tile Adhesive



CHEMICAL TESTING SERVICES

Cement | Flyash | GGBS | Microsilica |
Aggregates | Concrete | Rebar |
Couplers | Metallic Materials | Gypsum
| Water | Admixture

Chemical testing services of:

- Cement
- Flyash
- Silica Fume
- Ground Granulated Blast Furnace Slag
- Coarse Aggregates
- Harden Concrete
- Construction Water
- Concrete Admixture
- HT Wire Stand
- Structural Steel
- Gypsum Plaster
- Steel Tube
- Fine Aggregates
- Steel Coupler
- Stainless Steel Bars, Plates & Strips
- Added alloyed Reinforce Bar





PILE TESTING SERVICES

Pile Integrity | Pile Dynamic | Pile pull out test | Pile Static Load Test | Pile Lateral Test | Pile Vertical Cyclic Load



Pile Dynamic Test



Pile Integrity Test



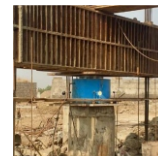
Pile Pullout Test



Pile Static Load Test



Pile Lateral Load Test



Pile Vertical Cyclic Load



FIELD TESTING OF SOIL

Field CBR | Plate Load Test | K value Test
| Field Density Test

Check out some of our Soil Field Tests:



Plate Load Test



Field Dry Density Test



Field CBR Test



Modulus of Sub Grade Test (K Value Test)



CONCRETE DURABILITY TEST

RCPT | Rapid Chloride Migration |
Concrete Depth of Water Penetration |
ISAT | Mass Concrete Temperature
Monitoring Drying Shrinkage | Modulus
of Elasticity

Check out some of our concrete durability tests:



Rapid Chloride Migration Test



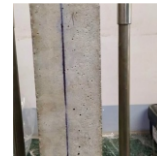
Rapid Chloride Penetration Test



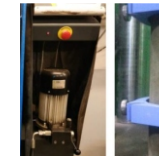
Concrete Depth of Water Penetration



Concrete Initial Surface Absorption Test



Concrete Drying Shrinkage Test



Modulus of Elasticity of Concrete



Mass Concrete Temperature Monitoring



CONCRETE MIX DESIGN SERVICES

Normal Mix Design up to M 40 Grade,
High Performance Concrete Mix Design,
Self-Compaction Concrete Mix Design,
PQC Mix Design

Check out some of our concrete mix design services:



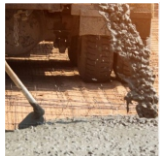
**High Performance
Concrete Mix Design**



**Normal Mix Design upto
M50 Grade**



**Self-Compaction
Concrete Mix Design**



PQC Mix Design



**Color Concrete Mix
Design**



**Light Weight Concrete
Mix Design**



CONCRETE NDT & MATURITY TEST

Rebound Hammer | UPV | Half Cell Potential Carbonation | Rebar Mapping & Cover depth Concrete Crack Depth & Crack Width | Endoscopy | Concrete Maturity Testing

Check out some of our Concrete NDT Services:



Rebound Hammer Test



Ultrasonic Pulse Velocity Test



Half Cell Potential Test



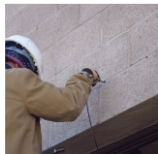
Carbonation Test



Rebar Mapping & Cover Depth of Concrete



Crack Depth & Crack Bar Monitoring



Concrete Endoscopy



Concrete Maturity Test



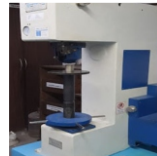
METAL HARDNESS TESTING

Rockwell Hardness Test | Brinell Hardness Tests | Charpy Impact Test

Check out some of our Metal Hardness & impact Test



Rockwell Hardness Test



Brinell Hardness Test



Charpy Impact Test



STRUCTURAL HEALTH MONITORING SERVICES

Structural health monitoring (SHM) is a field of engineering that deals with the continuous monitoring and evaluation of the performance and condition of a structure to prevent damage, ensure safety, and extend its lifespan. It involves the use of sensors and monitoring systems to detect and analyze structural deficiencies or defects, such as cracks, corrosion, or fatigue in real time.

Importance

Reinforced concrete structures are widely used in numerous infrastructures, such as buildings, bridges, tunnels, dams, and roads etc, due to their high strength, resistance to fire, and durability. However, these structures are subjected to various environmental and loading conditions, such as temperature variations, moisture, vibrations, and traffic loads, which can affect their structural integrity and lead to damage or failure.

Therefore, RCC structure monitoring is crucial to detect and diagnose any potential issues before they become severe and costly. By implementing SHM techniques, owners, and operators of RCC structures can ensure their safety, efficiency, and longevity, and avoid unplanned maintenance or replacement.



OUR MANAGEMENT



AVADHESH SHARMA **FOUNDER & MANAGING DIRECTOR**

Avadhesh Kumar Sharma is a highly accomplished Civil Engineer with over 25+ years of experience, making remarkable contributions to India's construction landscape. Graduating from a prestigious Indian institution with a Bachelor's degree in Civil Engineering, he has left a lasting impact on esteemed organizations such as Lafarge Concrete and Aggregates Pvt. Ltd., L&T Ltd, HCC Ltd., CCL, and Jaiprakash Industries Ltd.

In 2011, Avadhesh Kumar Sharma joined Global Lab, a leading materials testing, Calibration, and consultancy firm in India, where he played a pivotal role in establishing their reputation for excellence. With his unwavering dedication and expertise, he has made significant contributions to the civil engineering domain in India, setting new industry benchmarks.

Avadhesh Kumar Sharma's commitment to delivering accurate and dependable services has earned him acclaim. Notably, he developed a state-of-the-art Laboratory Software Operation, introducing paperless lab operations in India and adhering to ISO/IEC: 17025 standards.



HIREN JOSHI **FOUNDER & DIRECTOR**

Mr. Hiren Joshi is a professional Civil Engineer with over 20 years of experience specialising in Quality Control & Quality Assurance of Construction.

He has worked with renowned organisations such as the National Council for Cement & Building Materials (NCCBM), Larsen & Toubro Limited (L&T), and Lafarge Aggregates & Concrete. With a core expertise in concrete technology, Mr. Joshi's focus lies in High Performance Concrete, Concrete Durability, Non Destructive Testing, Concrete Maturity & Thermal Monitoring, and more.

He played a crucial role in establishing Global Lab in 2009, which has now expanded across India. Mr. Joshi is instrumental in establishing a Laboratory Management system as per ISO/IEC 17025 standards.

His strengths also include creating new business opportunities and nurturing strong customer relationships.



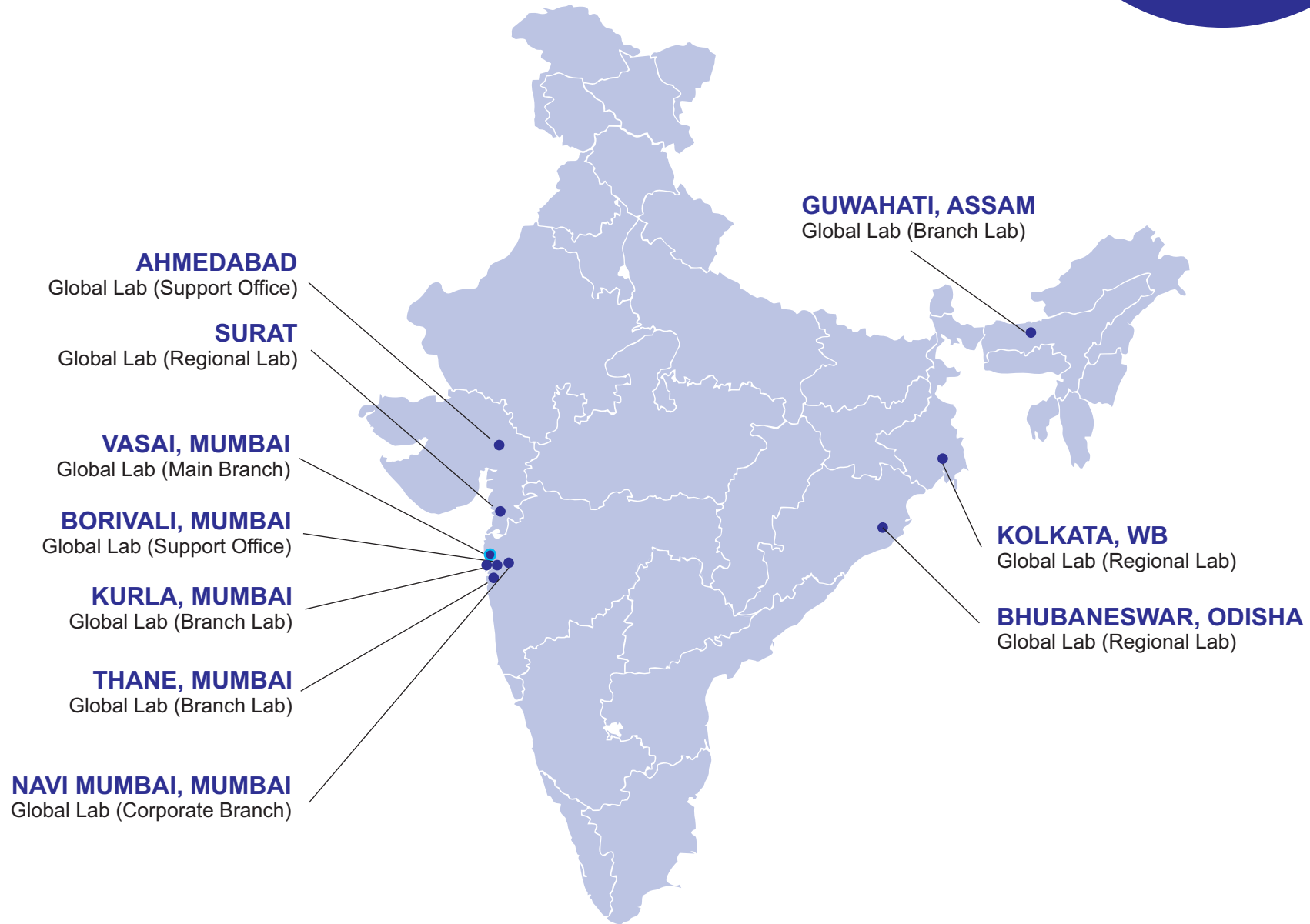
RAJEEV GHOSH **DIRECTOR**

Mr. Rajeev Ghosh is a highly skilled and accomplished Technocrat, boasting an impressive track record spanning over 27 years in the Infrastructure, Real Estate, and Building material/Ready Mix Concrete industries. With a distinguished Bachelor's degree in Civil Engineering, he has consistently showcased his prowess in specialized areas such as Quality Assurance, Testing and Analysis, Infrastructure execution, laboratory management, and cost optimization.

Throughout his illustrious career, Mr. Ghosh has held pivotal roles in leading companies, where he has made invaluable contributions to Quality Control, Marketing, and Technical Services. Furthermore, his involvement in cutting-edge Research and Development endeavors focused on Construction Chemicals and Fly ash-based products has further solidified his reputation as a forward-thinking industry leader.

Renowned for his exceptional leadership acumen and adept people management skills, Mr. Ghosh possesses a profound understanding of the intricate dynamics within the industry ecosystem. Driven by an unwavering commitment to excellence, he continually strives to surpass organisational goals and foster a culture of achievement. His strategic vision and unwavering focus on team-driven success have consistently yielded outstanding results throughout his career.

OUR PRESENCE ON MAP



OUR MAJOR CLIENTS

 <p>शुद्धिमात्र चरम कोशिकाओं में इंधन विभिन्न Nuclear Power Corporation of India Limited</p>	 <p>TATA TATA PROJECTS</p>	 <p>Kustomjee Come Home ISO 9001 : 2000 CERTIFIED</p>	 <p>RUNWAL</p>	 <p>Reliance</p>	 <p>LARSEN & TOUBRO</p>
 <p>HCC</p>	 <p>NUVOCO Shaping a new world</p>	 <p>omkar</p>	 <p>JMC PROJECTS (INDIA) LTD. A Kalpataru Group Enterprise</p>	 <p>SHREE BALAJI ENTERPRISES</p>	 <p>SWASTIK CONSTRUCTION</p>
 <p>LEIGHTON</p>	 <p>LODHA BUILDING A BETTER LIFE</p>	 <p>excel HOMES</p>	 <p>Shapoorji Pallonji Built to last... since 1865</p>	 <p>Hiranandani creating better communities</p>	 <p>NCC NCC Limited</p>
 <p>LOKHANDWALA CONSTRUCTION the name Mumbai trusts</p>	 <p>दिल्ली मेट्रो रेल कॉर्पोरेशन लिमिटेड Delhi Metro Rail Corporation Limited</p>	 <p>AIC INFRASTRUCTURES PVT. LTD.</p>	 <p>CAPACITE</p>	 <p>ASHOKA Ashoka Buildcon Limited</p>	 <p>Ambuja Cement</p>
 <p>Ahluwalia Contracts (India) Limited</p>	 <p>ACC</p>	 <p>AN ISO 9001:2015 & OHSAS 18001:2007 CERTIFIED COMPANY</p>	 <p>RELIANCE Infrastructure</p>	 <p>AFCONS</p>	 <p>Pidilite</p>
 <p>IFFCO</p>	 <p>UltraTech CEMENT The Engineer's Choice</p>	 <p>DLF</p>	 <p>OBEROI REALTY</p>		

CONTACT US



CORPORATE OFFICE: VASAI, MUMBAI

Unit No- 31& 32, Shethia Industrial Park, Opp Saiyali Petrol Pump, Near Golden Chariot Hotel, Vill- Waliv, Vasai (E), Thane – 401208 | Phone: +91 9323712211

Mr. Ankit Yadav | Phone: +91 8828318531
ankit@globallab.co.in



CORPORATE BRANCH: TURBHE, NAVI MUMBAI

Shop No-29 / 30, Krishi Industrial Estate, Opp. Everest Nivara, Near Indra Nagar Bus Stop, TTC Industrial Area, Turbhe, Navi Mumbai-400613. | Phone:+91 8433727515

Mr. Rajkishor Yadav | Phone: +91 8425861675
raj.yadav@globallab.in



BRANCH OFFICE: BORIVALI, MUMBAI

B-21, Shripal Nagar CHS, Satyanagar, Borivali (West), Mumbai-400092.

Mr. Mehfooz Khan | Phone: +91 7718862315
mehfooz@globallab.co.in



BRANCH LAB: KURLA, MUMBAI

284, Comely Building, Gr Floor, Opp Anjuman I Islam School, S G Berve Marg, Kurla (West), Mumbai-400070. | Phone:+91 8433727514

Mr. Abhay Parab | Phone: +91 8108151764
abhay.parab@globallab.co.in



BRANCH LAB: THANE, MUMBAI

Shop No 1-2-3, Building No-32, Bhav Residency, Dutta Mandir Road, Near Shivaji Maharaj Ground, Kasheli Kalher, Bhiwandi, Thane, Maharashtra- 421302 | Phone: +91 7208824684

Mr. Niraj Yadav | Phone: +91 8655973591
niraj@globallab.co.in



REGIONAL OFFICE: KOLKATA, WB

Ground & 1st Floor, 1073, Laskarhat Rd, Naskarhat, Kasba, Kolkata, West Bengal 700039.

Mr. Amarnath Ghosh | Phone: +91 7596067783
amarnath@globallab.co.in

CONTACT US



BRANCH LAB: SURAT, GUJRAT

153, RJD Textile Park, Ichhapore GIDC, Bhatpore, Surat Pin Code: 394510, Gujarat.

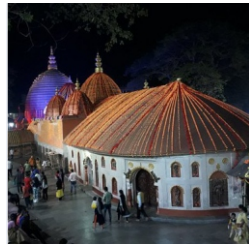
Mr. Jigar Dhaduk | Phone: +91 9725039730
jigar@globallab.co.in



BRANCH LAB: BHUBANESWAR, ODISHA

Plot No -206, Mahadev Nagar, Jharpada Road, Jharapada, Bhubaneswar- 751006, Odisha.

Mr. Shaswata Mukherjee | Phone: +91 7596067780
shaswata@globallab.co.in



BRANCH LAB: GUWAHATI, ASSAM

Ground Floor, House no 4, Kekora Nagar, Behind Mukesh Hyundai, Dispur, Guwahati, Assam Pin-781006.

Mr. S.K Alam | Phone: +91 8097457922
skalam@globallab.co.in



BRANCH LAB: AHMEDABAD, GUJRAT

A1-905 Palladium, Corporate Road, Prahladnagar, Ahmedabad – 380051

Mr. Hiren Joshi | Phone: +91 9930280649
hiren@globallab.co.in

WRITE TO US

- dev.sharma@globallab.co.in
- mehfooz@globallab.co.in
- mahesh@globallab.co.in
- avadhesh@globallab.co.in
- hiren@globallab.co.in

Testing Services Contact:

Mr Mahemood Ahmad (Lab Head-Vasai Lab)
+91 7718862313

Mr Baliram Vishwakarma (Lab Head-Turbhe Lab)
+91 8108151757

Marketing Contact:

Mr Dev Sharma (GM- Maharashtra Region)
+91 9930945853

Mr Mehfooz Khan (AGM – Maharashtra Region)
+91 7718862315

Mr Mahesh Sharma (Sr Manager- Vasai Lab)
+91 8828223365



GLOBAL LAB
BUILT ON TRUTH

Unit No- 31& 32, Shethia Industrial Park,
Opp Saiyali Petrol Pump, Near Golden Chariot Hotel,
Vill- Waliv, Vasai (E), Thane – 401208

+91 9930 280 649 | +91 91677 94 009

hiren@globallab.co.in | avadhesh@globallab.co.in
www.globallab.co.in

